

VOLUME LXI
NUMBER 8

Potomac Valley Skiers, Inc.
WASHINGTON MARYLAND VIRGINIA

AUGUST 2005
Editor: Jan Marx

President's Message

Fellow PVSers

Aren't we blessed to have such great members as the ones who, to our regret, have chosen to leave this area for a more historic environment, the beautiful residential areas abutting Williamsburg, Virginia?

The Clarks and the Sharers have made their moving decisions, and we will miss them even though they will remain members, continuing to participate in some of the club's activities, with Gene and Wilma remaining, admirably, the trip leaders for next season's Telluride trip. We are especially grateful to them for hosting our All-Trips Party at their beautiful Potomac mansion a couple of weekends ago. While the sale sign at the edge of their beautiful property reminded us that this is the swansong for PVS meetings there, it was exceptionally gracious and generous on their part to host more than 50 of us to such a great party and a most enjoyable, albeit very warm afternoon.

For this volume of Toot I wish to use my remaining space on an appreciation for the first to relocate, Dick and Marilyn. Members, at the suggestion of a founder, since 1969, they participated in the club's numerous Sutton trips, began to go out west with such as the late Norm Engleman in 1984, and loved it ever since. Indeed, PVSers have much to thank the Clarks for the many leadership positions they have filled with great competence, dedication and consistency. Dick and Marilyn served on ExCom, Marilyn as club president, Toot editor and mailer, chair of the 20th and 25th anniversary celebrations, the dinner celebrating the late Lu Beale's 80th, and on and on.

Dick retired in '97 after a long and successful government career; Marilyn is still pursuing her interior decorator passion. And both spend a great deal of their free time in a variety of charitable and social activities, such as their participation in the Georgetown Presbyterian Church choir, Dick as a musician with Kings Park Community Band, and membership in such renowned groups as the Women's Committee of the National Symphony Orchestra, the Salvation Army, and volunteering for the Hillwood Museum for the last 5 years.

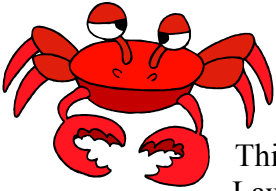
Their two boys and their families with a combined 4 grandchildren live in Houston, TX and Harrison, MT, respectively. All but the two littlest ones are avid skiers, of course.

It doesn't take much to surmise that the Clarks will be sorely missed by all whose lives they touched with their generous giving. As I wrote last month talking about summer, together, we'll overcome. For now we say a fond and grateful god speed to you, Clarks. Come back often and enjoy the camaraderie to which you've given so much.

David

~~~~~  
**NO Monthly Meeting in August.** See page 2 for information about the





## Crabfest Saturday, September 3, 2005

4:00 PM

*Rain or Shine*

This great event is back after an absence of about 5 years. It will be held by Betty Lawrence at her partially renovated Vienna (VA) home. Traditionally, Betty orders bushels of crabs. And the rest of us bring salads or desserts. If you wish, by can also bring “uncrabby” food that can be grilled (grill provided).

**RSVP Betty by Aug. 27** (703) 319-1860 or [lizl@verizon.net](mailto:lizl@verizon.net)

(Small fee for beverages, etc. and market price of crabs)

**Parking:** Street parking available (**SAFETY NOTE:** **Please** have every person get out of the car on the street side due to deep culverts, no sidewalks, and no shoulders OR drop off any passengers in circular driveway in front of house.)

**Directions:** *Easiest (\$1.00 toll):* Take Dulles Toll Rd (Rte 267) 5.5 miles west from Beltway to Hunter Mill Rd. exit 14; left (south) onto Hunter Mill Rd. (Rte 674) and follow it (you will have to make left turn after 1/3 mile to remain on Hunter Mill Rd. at T) 3.4 miles to Vale Rd.(Rte 672). Turn left on Vale Rd and proceed 1/5 mile to Trott Ave and turn left and then take next right (one block) onto Woodrow St. Proceed one block to corner of Woodrow St. and Gerken Ave. Betty’s house is on the corner. NOTE safety concerns above.

**Alternative:** Take Rte. I-66 to Nutley St North Exit and proceed 1.1 miles (crossing Rte.123-Maple Ave) until it ends at Malcolm Rd. Turn left on Malcolm Rd (Rte 672) and remain on it when it changes name to Vale Rd (remains Rte. 672). After proceeding about one mile, turn right onto Trott Ave and then take next right (one block) onto Woodrow St. Proceed one block to corner of Woodrow St. and Gerken Ave. Betty’s house is on the corner. NOTE safety concerns above.

**10,000 Woodrow St.**

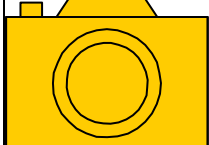
**703-319-1860**



### HELLO FOLKS, ITS MEMBERSHIP RENEWAL TIME

If you haven’t done it, **may we ask you not to delay any longer?** It’s so important that renewals are received shortly after the forms were sent out because, remember ?, it’s a benevolent volunteer-member that’s got to process it, another to make the deposit, all time-consuming activities which are best done when all can be done.

So please, be a cooperating member, and make your mailing just as soon as you finish reading this appeal. We’ll all be grateful for your assistance.

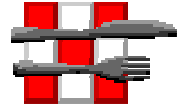


#### 40<sup>th</sup> Anniversary of PVS: Special Request

Please submit interesting photos of PVS events from previous years to Marvin Hass for inclusion in a special showing at the 40<sup>th</sup> anniversary celebration in November 2005. Photos can be prints, slides, or digital. Prints and slides will be digitized and returned to you. *Contact Marvin at (703) 751-4737 or by email at [info@potomacvalleyskiers.org](mailto:info@potomacvalleyskiers.org)*



***BICYCLING GOURMET***  
**VIENNA TO RESTON (and return)**  
**Thursday, August 18, 2005 10:30 AM**



**Route:** Seventeen mile round trip from the Vienna Community Center via the W&OD Trail and local roads to Reston with a rest stop at Lake Fairfax. We will then proceed to the lunch stop at the Calvert Gourmet Café overlooking scenic Lake Anne in Reston and then return to Vienna.

**Directions to Starting Point:** Beltway Exit 46A: Take Rte. 123 (Chain Bridge Road) south (direction: Tysons Corner) about three miles (past Tysons Corner) to Park St in Vienna (has left turn lane with traffic light). Take left turn into Park Street and proceed 1 block to Community Center on right (where W&OD Trail crosses road). Rest rooms and water available at Community Center.

**Leader:** Marvin Hass (703) 751-4737 [[info@potomacvalleyskiers.org](mailto:info@potomacvalleyskiers.org)]

Note: Starting time listed above is when cyclists actually depart; please arrive earlier to allow sufficient time to set up your equipment. Bike Rental available nearby. Check web site [bikes@vienna.com](mailto:bikes@vienna.com)

**July Ride Review:** Hot muggy weather in the 90's and an orange air quality alert did not deter a smaller than usual group – riding conditions on a tree-shaded C&O Canal towpath (and not on heat absorbing black asphalt) were actually OK and even better than on some previous occasions.

**Next ride:** Thursday, September 22, 2005 (tentative)

Two

Great

Bikers

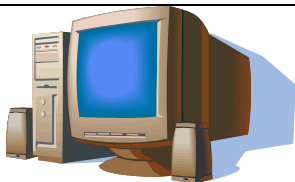
Lance

&

Marvin

with the most famous person who was ever on one of the rides he has led --

Lance Armstrong  
(Oct. 26, 1998).



**Web Site:** Photos for summer events (All Trips Party and Bicycling) are currently available.

**2006 Trip Flyers** can be accessed on the web site along with other Club documents such as minutes of the ExCom meetings and Bylaws.



## Oktoberfest



- When:** SATURDAY, October 1<sup>st</sup>, 2005 at 3:00 p.m. Rain or Shine
- What:** 27<sup>th</sup> annual PVS Oktoberfest featuring beer, sausages, sauerkraut, pretzels, potato salad, & pflaumen kuchen. Oompah music, too, for dancing of feet, clapping of hands, and cavorting of spirit.
- Call:** Mary Ward & Jim Slack at 703-754-8814 by Tuesday the 27<sup>th</sup> of September to reserve your place (limited to 60), to choose low-fat or high-test wurst, and to sign up for bringing a potato salad, kuchen, or other Bavarian delectable. No-shows will be responsible for their share of the cost.
- Cost:** Approximately \$8.00 per person.
- Bring:** Your own eating utensils and plate. Your favorite beer mug is, of course, always welcome.
- Optional:** Lederhosen and Dirndl. Even Pferdekleidung.
- Where:** Mary Ward & Jim Slack's Termineigh Horse Farm, Catharpin, Va.
- Directions:** In the September TOOT.

**W**illkommen



### Blue Knob Fall Foliage Weekend

*October 8, 9, 10*

Betty Lawrence is hosting this delightful weekend at her mountain house. The accommodations are limited.

More information in the September Toot.

### NEWS FROM THE 40<sup>th</sup> CELEBRATION DESK

Reservations keep trickling in. There aren't a lot of empty chairs left. So, if you'd like to occupy one of them, you need to make your reservation now. And when you do, please send your check to Rachel with your menu selection. That's the only way we can assure that you'll get what you wish to get. Just another little chore, and your seat will be secured. But, do it now!!

\$59.00 per person. Steak (cooked: R, M, W) or Fish.

Rachel Abraham 6201 Hollins Dr. Bethesda, MD 20817

#### BOLGER CENTER

If you to spend the night of November 5<sup>th</sup> at the Bolger Center it is \$129 including breakfast. This price was given to Rachel Abraham as part of our celebration. So, mention PVS when making your reservation – the rate may be even lower than stated above. The sooner the better because there is also a wedding reception taking place that night.

Contact Donna between 9:00 AM to 5:00 PM at 301-983-7195





# SNOWMASS 2006

PVS is again heading to Snowmass and the Mountain Chalet, January 19 through 26, 2006. Join us for this perennial favorite, both for its skiing and other activities. The trip will feature slope-side lodging with access to the extensive Snowmass trail system, and free bus service to Aspen Highlands, Ajax Mountain, and Buttermilk ski areas with interchangeable lift tickets.

A stay at the charming Mountain Chalet includes a daily family-style breakfast and lunch. Plans are being arranged that will include group dinners, après ski parties, air fare, lift tickets, and more.

For more information:

Contact trip leaders Carolyn Maurer and David DeVilbiss at 703-370-4865 or by email at [carolyn.maurer@verizon.net](mailto:carolyn.maurer@verizon.net).

To reserve:

- Send deposit of \$250 per person to:  
Carolyn Maurer at 4508 Peacock Avenue, Alexandria, VA 22304 or [carolyn.maurer@verizon.net](mailto:carolyn.maurer@verizon.net)
- Note "PVS-Snowmass 2006" on the memo line.

# Telluride-2006

Telluride, Colorado, February 2-9, 2006

A first class trip with 7 nights lodging at the ski-in/ski-out Wyndham Peaks Resort and Golden Door Spa at the Mountain Village, which includes access to the 42,000 square foot Spa and Ski Valet. An all Western experience! All taxes and daily maid service fees included. A Velvet Glove welcome wine and cheese orientation party included with a five day ski pass. Sixth day ski pass optional for an extra fee. Two group dinners, two après ski parties, pre and post trip parties and hotel baggage valet included. We depart on United Airlines #399 Washington Dulles 6:15 AM, arrive Denver 11:31 AM; depart Denver 8:55AM # 6293 and arrive Montrose 9:57 AM. Roundtrip van to Telluride and return to Montrose. (The Telluride airport is closed 60% of the time for weather in February.) We depart Montrose on United flight #6293 10:30 AM on the 9<sup>th</sup> and arrive Denver 11:31 AM; then depart Denver on flight #316 at 12:30 PM arriving Dulles 5:50 PM.

All the above for \$1,988 per person, double occupancy. Land only price \$1,588. Trip insurance is highly recommended; rates are not yet available. A minor price adjustment is possible based on potential airline fuel surcharges. Trip leaders are making a survey trip to Telluride in June. The back bowl(s) have now been connected to the front resort by lift. Gondola ride from the Village to the Town of Telluride approximately 13 minutes. Half of each slope is groomed; even the most difficult. Degree of difficulty approximately equal between green, blue and black. Join Gene and Wilma for this deluxe February Western ski experience. If you don't have a cowboy hat, get one!

For more info, call Wilma Sharer at 301-975-9411 or email at [wilma@sharerassociates.com](mailto:wilma@sharerassociates.com).

A TRIP FLYER IS NOW AVAILABLE:

We need one single female to fill the space left by a cancellation.

## Val Gardena & Munich March 3 – 14, 2006



From the JP Moser guide: 23.11.2004

"Hotel Diamant is a holiday oasis in the heart of the Gardena Valley!

Generous premises, a familiar atmosphere and an agreeable ambience distinguish the Hotel Diamant. A very interesting symbiosis - the high comfortable Hotel with the belonging Vital Centre Dona Dindia, fulfilling your every wish, and the fantastic surrounding mountain landscape of the Dolomites create the special charm and the unique flair- that will captivate you from the first day. Here it is very easy to rise every day of your stay to a festive moody day.

There are 9 room categories for both business and leisure travelers but especially for those looking high

standard in the roomy offer. The bedrooms, comfortable and wide, with either four poster beds or bunk beds, feature their own balcony.

The culinary highlights are remarkable, which they will give you pleasure all around the clock: if it is simply a snack taken in a romantic corner of the 8000 m<sup>2</sup> large private parc or the pleasure breakfast buffet or the excellent dinner in an peculiar ambience... they will always take care to let you have the best!

Last but not least, wellness and beauty are two of the strong points of this property; the "Vital Centre Dona Dindia" with indoor swimming pool (29°) and many other facilities such as the new and elegant sauna landscape with Tyrolean sauna and panorama window, the steam bath with aromatic fragrances, the bio sauna with mountain herbs smell, the Kneipp foot bath and a lot of space for relaxing."

**We have 12 spaces left. Hopefully, the pool temperature is in centigrade. We will NOT have bunk beds!**

Dick Comerford is leading the PVS part of BRSC's Eurofest trip to Val Gardena. Inquiries and comments are welcome. Tel: (703) 777-9374 [dick.comerford@adelphia.net](mailto:dick.comerford@adelphia.net)



Tuesday March 28 – Tuesday April 4, 2006

Enjoy Spring Skiing at its best with Dave Lerner and Jan Marx.

Winter Park is one of Colorado's oldest and largest ski resorts and we will be spending 7 nights at the luxury Zephyr Mountain Lodge at the base of the lifts. The package also includes round trip air transportation on United, lift tickets for a full 6 days (not the usual 5), ground transfer on a deluxe chartered bus, 3 group dinners, after ski parties, a pre-trip party, baggage handling at the resorts and tips and current taxes for all of the above.

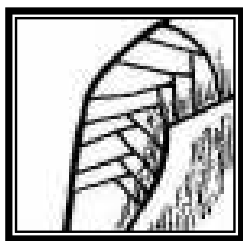
The Zephyr Mountain Lodge is Winter Park's premier ski-in ski-out lodging accommodation. It is an all-condo property and we have reserved two bedroom – two bath units with a fully equipped kitchen. One bedroom has a king bed, and the other has twin beds. (Living room hide-a-beds will NOT be used.) All units have VCRs and free high-speed data ports.

The mountain has a great selection of runs form easy cruisers to challenging steeps on the newer Mary Jane area. There is a 3060 foot vertical drop covering 2770 acres. There are 24 lifts, including 8 high-speed quads. Snowmobile tours, cross-country skiing, snowshoeing and ice skating are also available.

Value pricing is part of the Spring scene and we are able to offer the entire package for only **\$1160**. There will be a substantial discount for senior lift tickets (details not yet available).

A full trip flier is available on the web at: <http://members.cox.net/dlerner1/WinterParkFlyer.html>

Call Dave Lerner at 703-281-6923 for more information or send email to [dslearner@ieee.org](mailto:dslearner@ieee.org) or [Jebbmarx@aol.com](mailto:Jebbmarx@aol.com).



# THE KNEE

By Ray McKinley

Because of the month, I'll try to make this column a bit more august. At the start of a snowstorm, a single, silvery snowflake flutters down from the nighttime sky. It lands silently on the blissfully cool mountainside. Then comes another hexagonally perfect ice crystal, and then another. Soon the slopes are covered in soft, cool whiteness. Conifers are almost white, their branches hanging snow laden, rocks and bushes indistinguishable white powderpuffs. The days are serene; the world is at peace.

This break in the miserable August heat and humidity is brought to you by PVS's recognized favorite season. Winter.

A tip of the ol' Knee-cap to Marvin Hass. He put together a great set of data for our biennial membership renewal. And he sent it to everyone. All right, so it was a bit lengthy, but there's lots of good data and all essential. Now you kneed to do your part and fill in any blanks and send it off with your check. Stay tuned in a month or so for my membership renewal poetknee!

Enroute to Minnesota, for a summer relief from the heat Janet and Bob Marx' laptop PC died. They were able to borrow a Macintosh. So if this issue of TOOT has a bit of a brogue, you'll know why. On arrival at the lake, the temperature was 93°--ouch. The good news was that the water temperature was 80°--great for swimming—and fishing. The bottom line is that TOOT will be written/published by flashlight in some tent for at least one issue this summer.

If you are looking for a new vocation, perhaps you should pick up Bob Knopes' new book, "Any damn fool can be a Farmer." Perhaps it will teach you how to reap and sew.

Emergency Room nurse, Sue Lyon, almost, but not quite, got there herself. She had rotator cuff surgery, and is doing just dandy. If a man had it, it would be rotat-his cuff surgery!

Bad News. Returning home after rotator (not rotat-his) cuff therapy wasn't good for Barbara Leonhardt. Returning on I-270, the truck in front of her stopped abruptly. Barb stopped, but the semi behind her didn't. The

result was a Barbara Leonhardt sandwich. She's bruised all over, but airbags prevented serious injury. Her car didn't do as well—it's totaled.

More surgery. Dave Lerner is doing well after herkneeia repair. Note that it was between ski seasons, of course!

We wish all a speedy and complete recovery.

Betty Lawrence's daughter, Connie, and Suzanne Boisclair are going on a get away and adventure vacation to California. Betty also considered going along but decided she had to stay home and tend to her vast real estate holdings—and to prepare for Crabfest.

I trust you noticed that last month's Knee didn't have my name in the byline. I wrote it, but decided to go under cover for a month!

Bob Harmon has returned from a three week European trip, two weeks in Malta in an Elderhostel class and one week in Germany visiting old friends. Additionally, Sally Finan and George Welti are going to an Elderhostel class in up state New York. Is "up state" like being a red or blue state?

It's everywhere! Margaret Wyckoff's 10-year-old grandson (and Pat Vagonis' son, Justin) told his grandmother that before he would join PVS the name would have to be changed to Potomac Valley Skiers and "Snowboarders." Ouch!

It's in your genes. Later this month, Ivan and Marlene Bekey will travel to the Midwest to look at gravestones. They are into genealogy. Marlene can trace her lineage to the Mayflower, and further back into medieval England. Wow!

On a recent weekend, Polli Brunelli was in Minneapolis on business. And Rosemary Schwartzbard was in Pittsburgh for a family get-together. So spouses John Brunelli and Dick Schwartzbard went out to dinner *sans* spouses. The Knee likes to use foreign words like *sans* so you know how facile he is with foreign languages. *Sans* is an example of my Hebrew.

The Schwartzbard's also competed in a family event that many other PVSers have done. They jointly did a Half Iron-man Race. Son Aaron ran half of a marathon (13.1 miles), Dick bicycled 56 mi. and Rosemary swam 1.3 miles! They didn't win, but finished well ahead of many teams with a combined age less than half of theirs. Sadly, shortly after the race, Dick's new \$2,000 bicycle was stolen. Kneenuf!



# 8 All Trips Party by Mike Hatanaka and Jean van der Tak



This year's All Trips Party was held at Gene and Wilma Sharer's estate in Potomac. With its gracious mansion surrounded by manicured lawns and gardens, tall trees and a curlicue swimming pool, it was ideal for a summer evening's gathering. Some 50 PVSers sipped and snacked by the pool before President David Abraham opened the meeting at 5 PM, thanking the Sharers and setting the stage for the trip presentations.

A record five PVS-approved trips are on the agenda for 2006: three to Colorado and two to Europe. David and Mike Hatanaka in introducing the trip leaders - emphasized how grateful we are for their efforts in the planning of what is not an easy task. Several leaders had recently tripped to the sites on their own to scout out useful information for prospective participants. All are very familiar with their areas, and we can be assured of comfort, safety - and great fun!

Presented in detail by their leaders, these are the five trips:

1. Carolyn Maurer and Dave DeVilbiss - *Snowmass, Colorado* (1/19 - 1/26/2006)
2. Gene and Wilma Sharer - *Telluride, Colorado* (2/2 - 2/9/2006)
3. Ray and Nancy McKinley - *See Scandinavia, Ski Lillehammer* (2/17 - 3/5/2006)
4. Dick Comferford - *Val Gardena & Munich* (3/3 - 3/14/2006)
5. Dave Lerner and Janet Marx - *Winter Park, Colorado* - (3/28 - 4/4/2006)

Following the presentations, Wilma announced that dinner was ready in the house. There were ample fresh salads and Wilma's tasty beef BBQ, which we relished outside, despite the hot and heavy air, discussing the exciting trips and other upcoming PVS events. The evening concluded with delicious, calorific desserts, most made by PVS attendees. And a bit of a rush to depart before the heavens opened with a torrential rainstorm.

A great party, and we thank Gene and Wilma for inviting us before they leave for their new home in Williamsburg, VA.



## CALENDAR 2005-06

|      |       |       |                                                         |
|------|-------|-------|---------------------------------------------------------|
| Aug  | 18    | Thurs | Bicycling Gourmet; Vienna to Reston to Vienna.          |
| Aug  | 23    | Tue   | ExCom at Blockwick's                                    |
| Aug  | 25-29 |       | Finger Lakes Wine tour                                  |
| Sept | 3     | Sat   | Crabfest at Betty Lawrence's Rain or Shine.             |
| Sept | 20    | Tue   | Monthly Meeting at Waddick's, Alexandria                |
| Sept | 22    | Thurs | Bicycling Gourmet- TBA                                  |
| Oct  | 1     | Sat   | Oktoberfest at Slack/Ward's                             |
| Oct  | 8-10  |       | Blue Knob Fall Foliage Weekend at Betty Lawrence's      |
| Oct  | 18    | Tue   | Monthly Meeting at Monaghan's, Bethesda                 |
| Nov  | 5     | Sat   | 40 <sup>th</sup> Anniversary Party at the Bolger Center |



The Trip of a Lifetime—February 17 to March 6, 2006, join Nancy & Ray McKinley for a

# Scandinavian Smörgåsbord!

## 18 Days, Three National Capitals and Olympic Class Skiing



- 6 Nights 4 Star lodging at Lillehammer. Museums, Touring, Skiing in 3 different areas
- 3 Nights in Jewel-like Oslo including city tour with Viking Ships, Edvard Munch
- 3 Nights Stockholm, Sweden, including all day tour w/Fairytale Castles, & Gamala Stan
- 2 Luxurious Overnight Cruises through the Scenic Swedish Archipelago
- 2 Nights in Historic Tallinn, Estonia with ancient cobblestones and medieval turrets
- All breakfasts—except on cruises, 6 dinners, pre & post trip parties, air, baggage, tips.

**Scandinavia shines in the winter!** The major tourist attractions— even the outdoor parks— remain open and invite us all to enjoy ourselves with no summer crowds. Our winter’s trip there will be perfect for both skiers and sightseers. We’ll cover the highlights different countries. We also have 2 terrific overnight cruises set up. Our trip will be a true Scandinavian Smörgåsbord. **We believe this could be our best trip ever!** The scenery is fantastic and every day starts out with a superb, full, Scandinavian breakfast. And the skiing is super. The main ski area, *Hafjell*, is extensive with hundreds of ski lodges and cabins built onto the slopes. Here’s how our 2006 trip will go:

**Norway:** On Friday Feb 17, 2006 we fly from Dulles to Oslo. Then it’s off to the home of the 1994 Winter Olympics, picturesque, charming Lillehammer, Norway. We plan to stay six nights at the 4 Star Hotel Rica Victoria smack in the middle of the quaint downtown area, facing the pedestrian mall, *Storogata*. All breakfasts and dinners are included in Lillehammer.

Skiing will be at the *Hafjell* ski area, location of the major ski events during the ’94 Olympics. *Hafjell* was completely redone for the Olympics and has been considerably updated and added to since. ***Hafjell has over 15 miles of runs*** consisting of high mountain slopes and sheltered forest terrain, powder runs and packed slopes for all levels. ***It has 13 lifts and over 2,800-foot vertical (860 meters)***. We’ll visit other nearby downhill ski areas. *Kvitfjell*, with 7 lifts and 18 runs and a 2,600-foot vertical where the downhill and Super-G were held. We may also ski at *Sjusjøen*, an up-and-coming ski area nearby.

Sightseers can visit Lillehammer’s many museums including the Olympic Museum, the well-known art museum, and stroll *Storogata*, the expansive walking street, which stood out so brightly during the Olympics. ***Sightseers can also visit the world famous Maihaugen, an open-air museum with over two hundred buildings, some from as early as the 15<sup>th</sup> Century.*** Or they can join many Scandinavians and cross-country ski, snowshoe, go dog sledding, hiking or participate in any number of other outdoor sports. Also possible is an optional overnight trip by rail to the quaint coastal town of Bergen, voted one of the world’s most beautiful train journeys. ***The magnificent mountain, fjord and waterfall scenery is the best that Norway has to offer.***

After Lillehammer, it’s off to Norway’s captivating capital, Oslo. We’ll stay 3 nights at the 5 \*Hotel Bristol, walking distance to many of Oslo’s theatres, boutiques and best restaurants. Touring in Oslo will include a revealing city tour with a visit to the Viking Ship’s Museum where ***3 beautifully preserved Viking long ships from the 9<sup>th</sup> to 13<sup>th</sup> centuries are on exhibit—a spectacular sight.*** We’ll also visit the Edvard Munch museum home to hundreds of his paintings—and Oslo’s other sights, including Vigeland Sculpture Park where dozens of Gustav Vigeland’s provocative sculptures are displayed. Downhill skiing, and skijumping is also possible in Oslo’s city limits. Those on the 11-day package return after Oslo. (Over)

### **PRICES—18 Days \$3,896\* Land only \$3,391\* 11 Days \$2,723\***

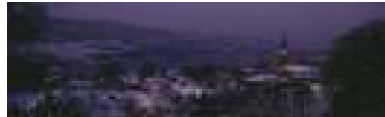
\* Prices based on 1 Euro = \$1.21 US, 1 \$ US = 7.2 Swedish Kroner, and 1 \$ US = 6.2 Norwegian Kroner. Prices may vary with exchange rate.

We are limited to 25 participants. To sign up, send the form below and your check for \$350 per person payable to Ray McKinley (refundable through July) at 2326 N Upton Street, Arlington, VA 22207. Please call us for more information at (703) 527-7126.

Name(s) \_\_\_\_\_ e-mail \_\_\_\_\_  
 Address \_\_\_\_\_ Phones (H) \_\_\_\_\_ (Work) \_\_\_\_\_  
 City \_\_\_\_\_ State \_\_\_\_\_ Zip \_\_\_\_\_ Roommate Pref: \_\_\_\_\_  
 Check all that apply: Air \_\_\_\_\_ Land \_\_\_\_\_ 18-Day \_\_\_\_\_ Single Supplement \_\_\_\_\_ Smoker \_\_\_\_\_  
 I have read the FINE PRINT. Signatures (If couple, both must sign)  
 X \_\_\_\_\_ X \_\_\_\_\_

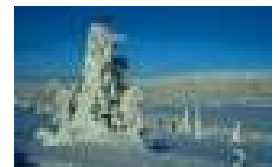
**SWEDEN:** After Oslo, we'll head for Scandinavia's largest and oldest capitol, Stockholm, Sweden. **Stockholm is built on a series of 14 islands, centered on the 14<sup>th</sup> century Gamla Stan, a former fortress that is now a rabbit warren of narrow, cobbled streets, lined with shops and boutiques selling everything from antiques to the very latest in haute couture fashions. Gamla Stan is captivating.** The Royal Palace is on Gamla Stan and the daily changing of the guard is quite a sight to see! **We will spend three nights at the 5 Star, spectacular Swedish modern Berns Hotel.** We have a full day tour of Stockholm's attractions including the 16<sup>th</sup> century warship, the Gustav Vasa, raised from the harbor in 1970 and now completely restored. We'll also visit Sweden's National Museum as well as the *Kungliga Slottet* (Royal Palace) initially

completed in 1697. Cross-country skiing is possible in Stockholm.. From Stockholm, we have an overnight cruise across the Baltic Sea. **The cruise ships are huge, 600 feet long with 12 decks, ballrooms, multiple restaurants and private suites.** **Cruises leave in the afternoon and sail along the gorgeous Stockholm archipelago with its 25,000 islands.** After a winter sunset, a gourmet buffet dinner is served, or you may eat in any of the other restaurants. Thereafter, we join the partygoers for some on-board revelry or retire for a relaxing evening.



**ESTONIA:** Next morning we'll sight the ancient towers of historic, medieval Tallinn, Estonia. Tallinn is the capital of Estonia, part of the former USSR. Estonia has been independent of Russia for some 15 years, much to the joy of the Estonians. Today, Tallinn is the liveliest of the capitals of the Baltic countries. It was our favorite spot on our visit, and we're certain you'll love it. Amongst medieval cities in Northern Europe, none is as well preserved as Tallinn.

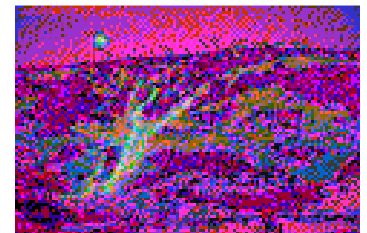
**Its mostly-intact city wall includes 29 stone 12<sup>th</sup> Century watchtowers; each topped by a pointy red tile roof.** With cobblestone streets and unique shops, it's a great place for tourists! In Tallinn, our choice for lodging is the recently renovated Imperial Hotel. **It's the only upscale hotel that has part of the ancient limestone 12<sup>th</sup> century town wall as part of the hotel.** We'll spend 2 days in Tallinn, touring the city and nearby countryside. Then we cruise overnight to catch our airplane and sadly, we'll return home on Monday March 6.



**TEMPERATURE and DAYLIGHT:** Everyone says Scandinavia is cold and dark. Not when we're going. In Lillehammer, over the past 10 years, **March temperatures have averaged 30° F during the day and 25° F at night.** In the capital cities, on the water, the temperatures are warmer. Regarding the amount of light: By March, when we'll be there, **Stockholm sunrise is at 6:30 am and Sunset at 5:40 pm for a total of 11 hrs and 10 min.** This is only a few minutes less sunlight than Big Sky, Montana at the same date. By March 21, the Vernal Equinox, the entire Northern Hemisphere has 12 hours of daylight.

### PACKAGE PRICE AND OPTIONS

The entire Scandinavian Smörgåsbord 06 package is \$3896. The land only package is \$3391. 11-day package—return after Oslo is \$2723, 14 day package—return after Stockholm is \$3469. Single supplement is \$771 for the full 18-day package. Lots of other options are available--call us. We can also help you with air from other locations; call at (703) 527-7126.



### PAYMENT SCHEDULE

A payment of \$350 is due with your application (unless paid) payable to Ray McKinley. The second payment of \$1850 is due by September 15, 2005 (no air: \$1550, Single supplement \$2350). Remaining fees (Complete package: \$1646, Land only: \$1441, Single supplement \$1917) due on November 29, 2005. Note: Payments are due when ours are. PLEASE MARK YOUR CALENDAR. Those payments not received by the date due must be charged a \$20.00 late fee.

### CANCELLATION FEES

In the event (hopefully unlikely) that it becomes necessary for you to cancel your trip to the Scandinavian Smörgåsbord, your trip leaders will make every effort to try to minimize your losses. However, the airline, the hotels and the tour operator mandate certain fees. Each emphasizes that every case will be treated individually, and some fees could, under some circumstances, be waived. All cancellations must be in writing. All fees will be less if a replacement is found. Cancellation fee is \$165 through October 10, 2005; October 11-November 11 the fee is 30%; November 12-December 3, 2005 the fee is 60%. After December 4 no refund is likely. We strongly urge trip insurance. The insurance package will cost about \$160. We will provide information when it becomes available.

### FINE PRINT

Partial or full payment for a reservation on this Scandinavian Smörgåsbord 06 trip shall constitute consent to all provisions stated herein.

PVS, its officers, its representatives, its agents or its members shall not be responsible for personal injuries, property damage, or loss, delay, or the change of itinerary to any person or trip participant which arises out of the action of any air carrier, hotel, or other persons rendering any services, accommodations and transportation arrangements being offered, or by reason of any circumstance.

PVS designated Trip Leaders, should circumstances demand, have the right to substitute hotels of similar or better category and to change transportation schedules. In the event of such changes, no refund or credit will be provided if accommodations, services, and transportation arrangements are of comparable or better quality or standards to those which were to be provided and are during the same approximate period. Any such change shall not modify the cancellation provisions of the Trip Agreement. No credit will be allowed or refund given for any service included as part of the trip and not used by individual participants unless agreed to by the Trip Leaders in advance. If the trip is cancelled for any reason whatsoever, PVS shall only be responsible to make a maximum effort to obtain the refund of all payments previously made for the trip from the person to whom the payment was made and there shall not be any further obligation on the part of PVS, its officers, its representatives, its agents or its members. Trip participants on this PVS sanctioned trip shall ski at their own risk and therefore PVS, its officers, its Board of Directors or its members shall not be responsible for any personal injury, property damage or injuries to others by a participant on a PVS sanctioned trip.

In the event that an odd number sign up for the trip, the last single to submit a deposit will be asked to assist in finding a roommate or to pay the single supplement