



# T O O T



Volume XLII No. 10

*Potomac Valley Skiers, Inc*

October 2006

WASHINGTON

MARYLAND

VIRGINIA

[www.potomacvalleyskiers.org](http://www.potomacvalleyskiers.org)

[info@potomacvalleyskiers.org](mailto:info@potomacvalleyskiers.org)

## President's Message

The tongue-n-cheek note in last month's Knee column was, uncharacteristically, totally accurate. We did take a vacation and cruised the Black Sea. Our first stop was offshore from the beautiful island of Santorini, one of the jewels of the Greek islands chain. While climatically mostly warm and sub-tropical, with very little rainfall and only rarely sub-freezing temps, this 10-squaremile protrusion from the Adriatic Sea resembles the most desirable ski areas. For all but a very narrow sea-level strip of land, it's a mountain, which rises but a few feet from water's edge. The largely flat top, site of all of the action is reached by either a tough climb, a donkey ride, or by a swiftly moving chair-lift.

Just looking around – make it a 360 scan – there's serenity, apparent peaceful tranquility, and much admired natural beauty. Grapes of peculiar taste and color adorn much of the still unmolested countryside, eventually reaching one of the local wineries.

So we just stood there and soaked in this so much admired ambiance, the one we all experience in varying degrees when we "hit" the slopes and just let gravity carry us to that feeling I describe as a mixture of euphoria, and unbelievable contentment, all wrapped in a mantle of gratitude for the experience, for the privilege to partake. One just stands there, observes nature's gift to mankind, and wonders why do people and nations quarrel, fight, and destroy? We skiers haven't forgotten this gift, of peaceful observation, which we experience anew with each ski-season, and throughout the year with our memories and aspirations. Perhaps that's it what sets us apart, and makes us keen to associate with our fellow skiers? Surely, our appreciation for the gift of beautiful nature is more profound and deeply ingrained. Just look at and from the top of Santorini and the like, and you'll be reinforced in your admiration, as we were.

With my fervent hope for peace and understanding, I wish for us all not to forget the beauty of earth's nature, and to continue enjoying it forever more. Let's join our fellow members at any of the wondrous trips our trip leaders have planned for us, and collectively enjoy these great outdoors. With these words I also pay homage to our just departed long-time friend and member, Geoff Wadey. Geoff knew and cherished "the better things in life", many of which he shared with us. His memory remains our gift; indeed, we will miss him.

*David*



## Monthly Meeting at Dorian Janney residence

**Tuesday October 17, 7:30 PM**  
9617 Harvest Knolls Way  
Gaithersburg, MD  
(301) 414-0121

Meet and mingle with your fellow PVSers and find out the latest information about the forthcoming ski trips at the residence of our new applicant member Dorian Janney.

### Directions:

\*from Beltway Proceed to I-270 toward Frederick  
\*Continue on I-270 about 11 miles past Montrose Road

\*At exit 16, right onto Father Hurley Boulevard (MD-27) toward Damascus. After 0.4 miles Road name changes to Ridge Rd (though still MD-27)

\*Proceed 5 miles from I-270 on Ridge Rd. then  
\*Turn RIGHT (East) onto Sweepstakes Rd  
\*Proceed 1.1 miles on Sweepstakes Road, then  
\*Turn RIGHT at T-junction (South) onto SR-124 [Woodfield Rd]

\*Proceed 0.6 mi then Turn LEFT (East) onto Harvest Knolls Way to 9817 Harvest Knolls Way (dead end street).

[Landmark: School in on right side of Woodfield opposite Harvest Knolls way]

*Note: HOV lanes on I-270 open to all vehicles.*

.  
.

*Inside: Note date change for Sun Peaks Canada Ski Trip*

## Future Local Events



### **BLUE KNOB** **Ninth Annual Fall** **Foliage Weekend** Fri-Sun Oct 6-9, 2006

**LAST CALL** to fill up Betty's Alpenglow Ski House at Blue Knob (Check out <http://www.alpenglowskihouse.com/>) . Space for 2 couples or singles. Changing colors should be brilliant at this time.

**WHERE:** Betty Lawrence's lodge at Blue Knob, PA  
**LOTS TO DO:** Hiking, flea markets, RR museum, spa, antiquing, serious eating and some partying.  
**COST:** approximately \$15/person/night, two-night minimum.

Accommodations limited

**CONTACT:** Betty Lawrence 703-319-1860  
[lizl@verizon.net](mailto:lizl@verizon.net)



### **Annual Frank** **Shelburne HIKE** Oct 18 10:30 AM (note above time change)

This year's Frank Shelburne hike will be an easy three mile circuit hike. The starting point will be at the Glen Echo/Clara Barton House parking lot . [There are signs to Glen Echo on the Beltway. From Virginia, look for the first exit to the right after crossing the American Legion bridge to Maryland and follow the signs via Clara Barton Parkway and MacArthur Blvd.; from Maryland, the route from the Beltway goes via Cabin John Parkway, Clara Barton Parkway, and MacArthur Blvd.]. The Route will involve the MacArthur Blvd bike/ped trail and the C&O towpath We will meet starting point at 10:30 AM. The route is flat except for the small sections to and from the towpath. The hike concludes right at the Irish Inn at Glen Echo, which is located in a historic restored building on the east side of Glen Echo. The main parking lot of Glen Echo is on the west side and this is where the hiking group will assemble.

As an added attraction, those who wish may take a tour of the Clara Barton House after lunch. Tours start every hour on the hour from 10:00-4:00. In case of bad weather, we will all just meet at the Irish Inn for lunch at 12:30 PM.

Please contact Sally Finan (703-716-9023) if you plan to attend or need more information. A head count is needed for lunch reservations.



### **Kentlands/Lakelands** **STROLL**

**Optional Dinner**  
**after the Stroll**  
Sat, October 28<sup>th</sup>  
2:00 pm

Sharon Mulholland and Barbara Leonhardt will lead a 1-1½ hour walk around the lakes, neighborhoods, and parks of Kentlands and Lakelands in Gaithersburg, MD. The route is generally flat. We will meet at Sharon's house at 2 pm to begin our walk. Near the end of our walk, we will pass through the "downtown area" where those who wish will choose a restaurant for dinner (probably Chinese and/or Italian). On the walk back to Sharon's, we can opt for a dessert stop. Non-diners will have just a few blocks to walk back to their cars from the restaurant area.

**To sign up, please call Sharon (301-963-2953 or Barbara (301-963-8111) and indicate if you wish to opt for dinner.** In case bad weather causes cancellation of the event, participants will be notified in the morning.

#### **Directions to starting point from south:**

- Take I-270 North to Rte. 28 West toward Darnestown (becomes Key West Ave.)
- Go 2.4 miles on Key West, then make a RIGHT on Great Seneca Highway
- At the 3rd light, make a LEFT onto Lakelands Blvd.
- Make the 1st RIGHT onto Gatestone St.
- At the end of Gatestone make a LEFT onto Main Street
- Make almost an immediate RIGHT onto Golden Ash
- Go 0.3 mile and make a LEFT onto Inspiration Lane to #410

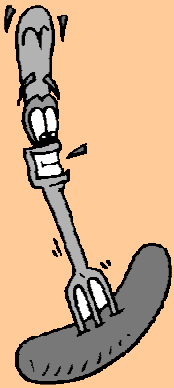
**I'm the yellow end unit townhome on the Left at 410 Inspiration Ln.**

Park by the "Green" across from the Mansion and walk to my home. See you all there

The Kentlands is a neo-traditional, or new urbanist, community. The community design is based on the concept that the most pleasant living environments were nineteenth century villages in which homes were grouped around a town center with shops, community buildings, and schools. New urbanism has developed architectural communities going back to this design.

## Future Local Events

# Oktoberfest



### 28<sup>th</sup> annual PVS Oktoberfest

**When:** Sunday, October 29, 2006 at 2:00 p.m. Rain or Shine

**Hosted by:** Pat Vagonis & Margaret Wyckoff

**Where:** Pat & Jim Vagonis' 11925 Ledgerrock Ct. Potomac, MD

### **We Provide:**

German Sausage, Beer-Beer-Beer - Wine, Soft Drinks, and Pretzels. And

### **Oompah music!**

**You Bring:** an appetizer; Sauerkraut, Potato Salad or Baked Beans, or Dessert.

Suggestion: Pflaumenkuchen recipe is in the PVS Cookbook.

**Also Bring:** Your own eating utensils and plate (and your favorite beer mug.)

**Optional:** Lederhosen and Dirndl. Even Pferdekleidung.

**Cost:** A small fee of \$8 will be assessed.

**RSVP:** Pat at 240-832-7145 by October 15<sup>th</sup>. **Tell her what dish you will bring.** Limited to 60.



### **Directions:**



**From Virginia** - From 495 N., take River Road exit towards Potomac. Proceed 3 miles turn right at light onto Falls Road. Go another 2.3 miles and turn left onto **(see Almost there...)**

**From Silver Spring** - From 495 N., bear right towards 270 N. Take 1st exit and turn right onto Old Georgetown Road. Make left at next light onto Tuckerman Lane, proceed 3.7 miles. Turn left at light onto Falls Road, proceed .3 mi, turn right onto **(see Almost there...)**

**From Gaithersburg** - From 270 S., take Falls Road exit towards Potomac. Proceed 2.3 miles and turn right onto **(see Almost there...)**

**...Almost there:** Glen Road (not S .Glen Rd), go another .7 mi. and turn right onto Gregerscroft. Make 3rd right onto Ledgerrock Ct. We're towards the end of the court on the right. #11925

(Phone **301-838-5545** if you're lost!)



## CHILI HIKE

Sat Nov 4 1:30 PM  
Great Falls Park, VA

This is the 20th anniversary of the PVS Chili Hike and it will be held on Saturday, November 4. Meet at 1:30 PM at the Great Falls Visitor's Center, Virginia side. After hiking through the gorgeous wilderness along the river and the falls just a few miles from the White House, we'll have a hot and not-so-hot chili supper at Ray and Nancy McKinley's house. The fall foliage should be perfect! All are welcome to hike (but call to sign up so that we don't miss anyone) but space for chili is limited. Call Ray or Nancy at (703) 527-7126 to sign up for hiking and/or to reserve a place at the chili supper and also to sign up to bring an appetizer, salad or dessert. Cost for supper will be about \$8. Join us!

## Wine Tasting for Wine Connoisseurs and Wine Lovers



Fri Nov 17, 2006 8:00 pm.

*A flight of 20 year old wines will be served along with some tasty hors d'oeuvres.*

Some of the possible wine choices are Chateau Gruaud Larose 1986, Chateau Talbot 1986, Chateau Clerc Milon 1986, Chateau Pichon Longuevell Comtesse De Lalande 1986, Insignia 1986, etc.

**Where:** John and Dorie Waddick's. 1605 N. Howard Street Alexandria, VA 22304

**Limited to 20 people.** Cost of \$40 per person.

**Sign up** at the September monthly meeting at the Waddick's or call the Waddick's at **703-751-3143**.

Email: [dewaddick@comcast.net](mailto:dewaddick@comcast.net)



Local Event Reviews

**Crabfest: Sept. 3, 2006 (postponed from Sept. 2 due to hurricane threat)**



The 2<sup>nd</sup> annual Crabfest held at Betty Lawrence's home in Vienna over the Labor Day weekend enabled the twenty or so participants who opted for the specialty of the Chesapeake Bay. This was supplemented by appetizers, salads, and desserts brought in by the participants. As can be seen by the photos, Betty's house, with its large paved

deck, and expansive back yard, and hospitable hostess made an ideal location for PVS events of this nature (as was her previous house in Great Falls which was the site of many previous Crabfests). All of the 27 PVS participants owe a big vote of thanks to the hostess for arranging this stellar event.



Hostess Betty Lawrence



Left: Betty's daughter Connie selecting a crab

Right: Rachel Abraham pounding away at this labor-intensive delicacy.



Rachel Abraham 2006  
pounding away

**A Trip Down Memory Lane:** A web page with photos taken at the Crabfest in September 2000 at Betty's Great Falls home can still be viewed online at the old web site until June 30, 2007. Go to the PVS web site [www.potomacvalleyskiers.org](http://www.potomacvalleyskiers.org), scroll down the left hand side to "Old Web Site" and follow through to "Members Only" (Use "TOOT" as password), click on "Photos of Past Events," and scroll down to bottom and then click on "Crabfest Sept 2000".

## Local Event Reviews



### Monthly Meeting **September 19, 2006**

The first meeting after the summer recess was held in the Alexandria home of Dorie and John Waddick, which is always a delight to see what improvements have been added. After the refreshments, the forthcoming local events and the ski trips for the coming season were reviewed. The group then paid tribute to and some present gave recollections of PVS member, Geoff Wadey, who passed away on September 15 at the age of 88. After coffee, the group of 40 expressed their appreciation to the hosts.

*Recollections of Jan Marx about PVS member Geoff Wadey who passed away in September 2006.:*

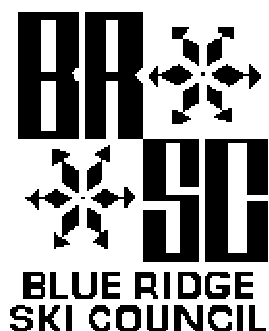
*Geoff has been a loyal PVSer almost since the club's beginning. He was dedicated to preserving the club and its high ideals in regards to its being "the club for skiers." He was President in the early stages of the club at a time when membership was dwindling and very active when job and time allowed.*

*Even though he has lived in Massachusetts for many years, Geoff has participated in PVS' ski trips and has attended anniversary dinners. In recent years, he has joined the Snowmass trips, the Winter Park trip last year, and was signed-up for two of the PVS ski trips for the coming season. Geoff has traveled extensively and had great stories to tell; his Antarctica trip was a recent adventure.*

---

### BRSC Meeting

### September 16, 2006



Forty four members from the local clubs attended the meeting. PVS was represented by Charles Huggins, Glade Flake, and David Lerner. Early discussion was on the trips to Big Sky and Schladming. Nine clubs are going to Big Sky, and attendance should be around 300. PVS is participating on this trip and will be staying in the Summit Lodge. Snowcoach trips into Yellowstone National Park are available and come highly recommended. Five other clubs besides PVS are going to Schladming in Austria. Pre and post sightseeing trips are available to Vienna, Athens, and Munich. All clubs will be staying at the four star Sporthotel Royer.

Judy Burlbaugh and Peter Porton reported on the Nations Ski Council Federation meeting which was held in August at Layton, Utah. FAM trips were encouraged, but clubs were cautioned not to abuse them by going on FAM trips unless they intended to run a trip to the ski area in the near future. Discounts are available at Breeze and Christy Sports on western trips. Judy recommended that all club members wear helmets, and mentioned that inexpensive helmets are available from Helmets R. Us in Tacoma, Washington.[web site: [www.helmetsrus.net](http://www.helmetsrus.net)]

The BRSC website was established in 1996 by Wayne Homens. In August and early September, the site was getting about 450 hits per day with 75% coming from U.S. and the other 25% from foreign countries. The new webmaster is Frank Penaranda from SCWDC.

The BRSC participants awarded the 2008 Steamboat trip to Sportours and the Interlaken trip to Group Trips Unlimited. Paul Dietz from the Columbia club will coordinate the Steamboat trip, and Nobel McCellen from Richmond will coordinate the Interlaken trip. The 2009 trips will go to Keystone and Davos.

---

**from AspenSnowmass web site**

**WINTER OUTLOOK:** Regarding this winter, we have a developing El Nino sea surface temperature pattern in the Pacific. The latest ([Sep 13th](#)) is that we may see a moderate El Nino SST pattern this winter. We expect the following this winter; A good shot at seeing more snowfall than average for southern Colorado, and less snowfall than average for northern Colorado...in general. We do think winter will start off with a bang though, with possibly more snowfall than usual through December. Many times in an El Nino pattern, we are also dealing with snow levels being a bit high on average as the moisture source is usually subtropical, but this is rarely an issue for high elevation Colorado resorts. The time this pattern seems to be most pronounced is January onward. We will watch and see how this develops.

## Dec 2006/2007 Ski Trips

### Steamboat Springs (Trip is Open)

### Wedel Week Reunion December 8 – 15 2006



The Potomac Valley Ski Club invites you to attend a Wedel Week in Steamboat Springs, Colorado with Dick & Betty Comerford as your host and hostess. Steamboat Springs, Ski Town USA, has a base elevation of 6900 feet, ideal for anyone who has difficulty adapting to high altitude (sleeping below 7500 feet keeps the headaches away). Winter is fast approaching! Keystone has already received a 2 foot snowfall. Now is the time to get serious about the daily walking and exercise program that you planned to do to get in shape for skiing.

Steamboat continues to evolve, according to the latest Ski Magazine Steamboat has upgraded the Sunshine triple chair to a **high speed express** and has expanded the terrain in the Sunshine Bowl.

Apres-ski activities will be based around our luxury **ski-in/ski-out Sheraton Hotel**. The package includes **all breakfasts, 3 good group dinners, nightly apres-ski gatherings, a special awards ceremony and a post-trip party**. We should be able to ski with Billy Kidd, but if he is not available, we will have a special guest lead us in a warm-up run.

- \* 7 Nights Lodging
- \* 25 Yards to Gondola
- \* Rooms Have 2 Queen Size Beds
- \* Starbucks Coffee in Each Room
- \* 4 Restaurants & 3 Lounges
- \* Heated Outdoor Pool
- \* 7 Hot Tubs, Steam rooms & Saunas
- \* 4 High Speed Quad Chairs
- \* Average Snowfall > 27 Feet
- \* 3668 Vertical Feet - 2nd Highest in CO
- \* 164 Ski Trails
- \* 25 Lifts (1 Gondola)
- \* 13% Beg, 56% Int, 31% Adv
- \* Lots of local activities
- \* Convenient to Restaurants & Shops
- \* Full Service Luxury Hotel

7 Nights Lodging, Daily Breakfast, 3 Dinners, Apres-ski -----\$790  
 Air and Ground Transportation-----\$490  
 Total-----\$1280

**Call Dick NOW** 703-777-9374 -- [dick.comerford@adelphia.net](mailto:dick.comerford@adelphia.net)

Check for full amount Payable to Dick Comerford at 307 Lounsbury Ct, Leesburg, VA 20176-2335.

**Final Payments are Due. We are currently at 17. We are still open and in particular, need a single female.**



**Limited space may still be available.**

January 18 through 25, 2007. Join us for this perennial favorite, for its excellent skiing, and for its many other activities in the Aspen environs. Choose among four entire mountains that share one

interchangeable lift ticket with more than 5,000 acres of skiing, and free bus service to Aspen Highlands, Ajax Mountain, and Buttermilk ski areas. Enjoy the convenience of slopeside lodging with direct access to the extensive Snowmass trail system from the Snowmass Mountain Chalet. A stay at this charming Chalet includes a daily family-style breakfast and daily soup lunch, greatly appreciated by trip participants and other guests, many of whom return year after year.

Trip will include group dinners, après-ski parties, and other events. This year we are planning an optional excursion to the mountain village of Redstone for lunch and other activities.

Come join us! Complete trip cost \$1890. Air is arranged with United Airlines.

For more information:

Contact trip leaders Carolyn Maurer and David DeVilbiss at 703-370-4865 or by e-mail at [carolyn.maurer@verizon.net](mailto:carolyn.maurer@verizon.net).

To reserve:

- Send deposit of \$250 per person to:
- Reminder: Second deposit of \$750 is due August 15.  
Carolyn Maurer, 4508 Peacock Avenue, Alexandria, VA 22304
- Note "PVS-Snowmass 2007" on the memo line



## 2007 PVS/BRSC Ski Trips

PVS + Blue Ridge Ski Council Presents

### WESTERN CARNIVAL + BIG SKY

February 3-10, 2007



Next payment due = \$500

**Big Sky** Montana, its Euro-style tram, & **NO WAITING AROUND**. 18 lifts and a spectacular tram transport skiers to 3,600 skiable acres. The terrain on the 3 mountains ranges from the tame wide slopes of *Southern Comfort*, with plenty of **blue terrain**, to the steep chutes and wide-open **powder fields of – Lone peak – 11,166 ft**  
**Average snowfall – 400 inches.**

**Beginner – 17% Intermediate – 25% Advanced – 37% Expert – 21%.**

**Moonlight Basin** area has a mix of **green, blue** and **black** trails with, **long, groomed runs** + the **Headwaters hike-to-ski area**.

**The two ski areas are connected.** A 6<sup>th</sup> day ticket for \$26 will get you a one ride ticket from Big Sky chair lift to Moonlight Basin. You can ski back to Big Sky.

**LODGING:** We **upgraded to The Summit**. Every room has a sink, small frig, coffee maker, hair dryer, cable TV, & free wireless dataports. Many rooms have a King size bed, gas fireplace, and, jetted spa bathtub. (Other room configurations available.) Ski storage is in the lobby. Fitness center, swimming pool size hot tub, restaurants in hotel.

**Three high capacity lifts within 100 yards of the entry**

**SKI-OUT, SKI-IN**

**Daily breakfast buffet included.**

**Lodge elevation – 7,500 ft**

**In addition our PVS group will have:**

- ✦ Pre-trip party.
- ✦ Two apres ski gatherings.
- ✦ Optional group dinner.
- ✦ Pot-luck post-trip party.

**INCLUDED:** ✦ Round trip airfare (Washington to Bozeman) ✦ Round trip transport (Bozeman to lodging) ✦ Seven nights lodging (double occupancy) ✦ All taxes ✦ Baggage handling in & out of hotel ✦ Five out of six-day lift tickets at Big Sky ✦ Welcome Party ✦ Après Ski Beer Blast - ✦ Nastar Race – at Moonlight Basin ✦ Farewell Dinner Dance

*More rooms available. Need one male and one female))*

**COST \$1,490** Contact Marty Rine: 703-978-0179 or [mrine@cox.net](mailto:mrine@cox.net) OR Jan Marx: [Jebbmarx@aol.com](mailto:Jebbmarx@aol.com)

Land only = Less \$400. Single supplement = Add \$350. Non-skier = Less \$140.

**SIGN UP:** Send \$1250 (check payable to PVS Big Sky 2007), to: **Marty Rine**, 5256 Lonsdale Dr, Springfield, VA 22151

[www.bigskyresort.com](http://www.bigskyresort.com)

[www.moonlightbasin.com](http://www.moonlightbasin.com)

## SKIING IN SCHLADMING, AUSTRIA

TOURING IN ATHENS, GREECE AND IN VIENNA, AUSTRIA

ATHENS, GREECE – Monday, February 26, 2007 to Saturday March 3, 2007

SCHLADMING, Austria - Saturday, March 3, 2007 to Saturday March 10, 2007

VIENNA, Austria – Saturday, March 10, 2007 to Tuesday, March 13, 2007

**ATHENS, GREECE:** Four nights at the Divani Palace Acropolis a five star deluxe hotel near the Acropolis

**SCHLADMING, AUSTRIA:** Seven nights at the Sporthotel Royer a four star hotel.

**VIENNA, AUSTRIA:** Three days at Hotel Regina a four star historic hotel, located in the center of the city.

**THE SKIING:** The region of Schladming-Dachstein-Taussern is one of the largest ski areas in Austria with a four inter connected mountains. Snowmaking on 100% of the ski slopes. There are 90 ski lifts and, 167 kilometers of downhill runs. Glacier skiing on the Dachstein Glacier. Ski runs as long as 5 miles.

**Maximum elevation 6,600 feet Vertical drop 3,700 feet; Ski Terrain:** Beginner: 30% Intermediate 60% Expert: 10%  
Cross country skiing -- 60 Km of cross country ski trails. Lift tickets: The five day regular lift ticket in 2006 was \$168 and \$150 for seniors

### TRAVEL ARRANGEMENTS:

Fly from Washington Dulles Airport to Munich on United Airlines and then to Athens, Greece.

Fly from Athens to Munich on Lufthansa airlines. Motor coach to our hotel in Schladming, Austria.

Transfer by motor coach from Schladming, Austria to our hotel in Vienna.

Fly from Vienna on Lufthansa airlines to Munich and then to Washington Dulles airport on United Airlines.

**INCLUDED IN PRICE:** Total Price \$2,900 (double occupancy) includes all of the above plus transfers, buses, and trip insurance. (Price based on Euro price of 1.24 to a dollar). Pre Trip Party, Portage of All Baggage, Post Trip Party.

**Includes Medical Insurance and Trip Cancellation / Interruption Insurance.**

**NOT INCLUDED:** Lunches, Lift Tickets, Diners in Athens and Vienna.

**TOTAL PACKAGE PRICE -- ATHENS+SCHLADMING+VIENNA \$ 2900 (DOUBLE OCCUPANCY)**

Single supplement and Skiing in Schladming (only) – Available on request – price to be determined

**PAYMENT SCHEDULE: DEPOSIT NOW: \$ 200; Aug.1 \$500; Oct. 1 \$500; Dec.1 \$500; Jan. 1 \$700**

**IF YOU ARE INTERESTED IN JOINING US OR HAVE ANY QUESTIONS:**

Contact: Glade Flake ([gladeflake@aol.com](mailto:gladeflake@aol.com)) 301-762-6890 OR John Smith ([johnsmith@juno.com](mailto:johnsmith@juno.com)) 301-299-8376

**TO RESERVE:** Send the trip application form and a deposit check for \$ 200 payable to **Glade Flake**

**TO:** Glade Flake, at P.O. Box 60347, Potomac, MD. 20859

## March 3-11, 2007 Join Nancy and Ray McKinley to Ski



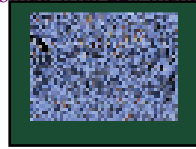
# Sun Peaks

Three Mountains ~ One Village



The Potomac Valley Skiers are returning to a true gem of a resort, Sun Peaks. We went in 2005, and EVERYONE wanted to go back, so we're doing it! Sun Peaks is Canada's newest, brightest destination resort. It's a skier's paradise. And, unlike the Coastal British Columbia resorts, Sun Peaks Resort is known for its sun. Yes, the sun shines at Sun Peaks. And shines. And shines. And shines--more sunny hours than any other resort in North America! The BC ski resort logs an average of 2,000 hours of sunshine per year. That sun, combined with 220 inches of snowfall and mid-winter temperatures of 20 to 25 °F, helps make Sun Peaks a favorite for fair weather ski holidays.

Sun Peaks has some other claims to fame, such as the best grooming in Western Canada and the best weather for skiing in all of Canada. It has 3,678 acres, a vertical of 2,891 feet, 91 runs and a charming, Tyrolean-style car-free village that twinkles under the alpine starlight. Sun Peaks skis like Whistler. But, unlike Whistler, it has no coastal rain or fog! For info, e-mail us [sunpeaks2007@potomacvalleyski.org](mailto:sunpeaks2007@potomacvalleyski.org)



*Exciting New Dates March 3-11, 2007 Same Great Trip, Same Great Price  
Some Space Still Available*

*→ And there are now no conflicts with other PVS Western Trips ←*



Our 9 day 8 night Trip Includes: 7 Nights at ski-in ski-out at Olympic Gold Medalist Nancy Green's Cahilty Lodge featuring spacious rooms and superbly appointed suites. It has a restaurant, hot tub, bar, and fitness facilities, radios, in-room coffee machines, and more. For only \$31 pp additional you can upgrade to a studio with kitchen and additional amenities including fireplaces or balconies. We have a final night at the 5 Star Fairmont Hotel Vancouver.

We feature two people per hotel room. 5 of 6 Day lift passes good at all three mountains. 3 great group dinners, incl. a snowshoe, on-mountain fondue dinner. Welcome wine & cheese, happy hours, pre & post trip parties.

Airfare, hotel baggage handling and tips, bus gratuities.

**GREAT PRICES - \$1,896; 65+ \$1,844; Nonskiers \$1,687**

Land Only \$1,446 (Based on \$1.11 CAN per \$1.00 US) Upgrade to Studio add \$31, Breakfast Package add \$108  
This trip sold out early last year so act soon. Please call us for more information and to get a copy of our full flyer at 703 527-7126.

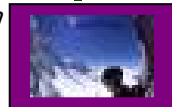
**To sign up send \$1150 per person to Ray McKinley, 2326 N. Upton Street, Arlington, VA 22207**

## **NEXT SUMMER--August 9-25, 2007, join Nancy & Ray McKinley to See & Ski in Argentina and Brazil**

***The grandeur of Argentina's Andes, the Old World beauty and tango passion of Buenos Aires, and to top it all off – a 3 day add-on to magical Rio de Janeiro, Brazil. 8 days and 7 nights in Argentina's world-class 40,000 acre, 4,100 ft vertical ski resort, Las Leñas, and 5 days, 4 nights in America's most cosmopolitan city, the Paris of the W. Hemisphere, Buenos Aires. And there's an option for a 3 day add on to Brazil's Carnival town—Rio de Janeiro.***

***While we suffer summer, enter Argentina's Las Leñas, the largest lift-serviced skiing area in the Western Hemisphere. This resort stretches across 40,000 acres of the Andes & is outfitted with 13 lifts, 40 miles of trails, and 4,100-foot vertical drop from its 11,253-foot summit. Las Leñas is 7 times the size of Vail.***

***Las Leñas' is divided into 2 main areas. The lower section's lifts connect a variety of groomed trails, ideal for beginners and intermediates. Experts seeking the off-piste perfection that makes Las Leñas world-famous continue up to huge bowls, steep chutes, and fresh powder. With copious snow, and superb skiing, Las Leñas is the great place to ski in August!***

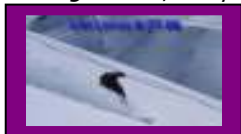


***We'll include all lodging in 4 or 5 Star hotels, daily breakfasts, and all Dinners at Las Leñas 2 dinners in Buenos Aires, all transfers, happy hours, airfare from Washington DC, pre and post trip parties, and eye-opening tours in Buenos Aires including a trip to one of the gaucho Estancias (ranches) outside of town. This will include a parillada featuring all the finest of cuisine and entertainment. Our stay in Buenos Aires also offers a not-to-be missed, first-class tango show and dinner.***

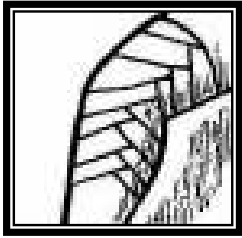
***We have a spectacular 3-day add-on. This will include round trip air to Rio, 4 Or 5 star lodging near Copacabana and Ipanema Beaches. We'll tour the city, visit Rio's signature Sugarloaf Mountain, the statue of the Christ, and much more. Rio is the only city in the world with a tropical rainforest within the city limits. We highly recommend this unique city and the add-on.***

***Schedule:*** We leave from DC Thurs eve, Aug 9, 2007, spend Fri in Buenos Aires, and leave Sat for a week at Las Leñas. Then to Buenos Aires for 4 days. On Aug 21 we fly to Rio, Brazil's wonderland. On Aug 24 We fly back to DC overnight.

***Cost:*** We don't yet have a firm cost. However, since the Argentine peso is very weak, we expect the cost for the 14 day trip to be about \$2,700-\$2,900. To add 3 nights in Rio, Brazil should be, including airfare, \$700-\$900. Our See and Ski trip is for everyone. **Space is limited for this trip of a lifetime.** To hold a space, send a check for \$100 per person, to Ray McKinley. Mail it to 2326 North Upton Street, Arlington, VA 22207-4045. This deposit is refundable until October 2006 when we will finalize costs our trip. Call us at 703-527-7126 for more information. Or you can e-mail us [ArgentinaBrazil2007@potomacvalleyski.org](mailto:ArgentinaBrazil2007@potomacvalleyski.org)







# THE KNEE

By Ray McKinley

There is a new movie out that stars Al Gore (Al Gore, with his drawl and looks, a movie star??). The movie is called “*An Inconvenient Truth*.” While somewhat overblown, it’s about the inevitable melting of snow and ice caused by carbon dioxide-fed global warming.

The good news for skiers is that the Colorado weather folks have not seen it! It has been snowing there like mad. They had their snowiest September ever. According to an Aspen Times newspaper article provided by Marvin Hass, Independence Pass, outside of Aspen closed on September 22, the earliest ever (as you may recall, Fall didn’t start until September 23). Interstate 70 closed for a day. Vail, Breckenridge and Beaver Creek received more than 2 feet of snow, and tiny Silverton Mountain reported 36 inches. Goody! Goody!

With all of that snow, can skiing be far behind? No. The Knee and Nancy lay claim to being the season’s first skiers. We skied September 4-8 on beautiful groomed and ungroomed slopes in *Las Leñas*, Argentina. OK, it was in the Southern Hemisphere and thus the end of the current season, but who is counting?

At the ExCom meeting at Dick and Rosemary Schwartzbard’s, Judy Jones was enjoying their Japa-Knee-se antiques (I couldn’t resist). She asked how come they collected them. Responded Dick Schwartzbard, that’s simple, it’s because I’m Japanese!

Jan and Bob Marx arrived back in DC from their summer’s trip to Min-Knee-sota (again) and went directly to the ExCom meeting. They are now back in Minnesota for a Memorial service for Bob’s father. They report great fall weather. The Memorial service was very well attended because as you likely know, Bob’s father was one of the original builders of the Great Lakes! I know, I get really bad Marx for that line. But I’ll do better, you Marx my word.

A tip of the ol’ Knee Cap to Polli Brunelli. She was featured prominently in an article on the Post’s Federal Page in September. It was about her new internet voting initiatives for US Military stationed overseas. We’ll have Polli run PVS’s next

election—over the internet.

PVS continues to travel. Bob and Karen Knopes had a super time in Botswana. A bit farther North, Dick and Sandy Laeser visited Krakow, Budapest and Prague. They had a ball, but it was a surprise. They thought they were headed for Eastern Long Island and ended up in Eastern Europe. Travel agents!

In the Western Hemisphere, after skiing in *Las Leñas* The Knee and Nancy really enjoyed Buenos Aires and its Tango and then Rio de Janeiro with its incredible views from Corcovado Mountain and its sultry, sensual Bossa Nova beats.

Applicant Sallie Mullen will spend the month of October at a 15<sup>th</sup> Century now organic farm in Italy. From there she will do some touring in nearby Tusca-Knee.

Club Stuff: After a tremendous amount of work over two years by outgoing Treasurer Ray Jones, PVS has moved. For our first 40 years, we were a nonprofit organization in the District of Columbia. We are now chartered as a nonprofit in Virginia (This, by the way, is not at all the same as saying Saddam Hussein is a non-prophet.) PVS, Inc DC has now merged into PVS, Inc VA. Why should we care? It’s simple. According to Virginia law, Officers in a Nonprofit cannot be sued for more than twice their annual salary—and we pay poorly. QED

Dave DeVilbiss came up with a ukneeque reason for Ruth Powers and Carolyn Maurer missing the PVS September meeting. They are in Kneepal and Mongolia to go trekking in the Gobi desert. And that’s not a “just dessert.” It will Gobi yond that.

More on Al Gore. You can guess why—I can’t. The Knee saw an SUV with the license Gore ’08. It was broken, being towed. It’s true.

A month ago, the Washington Post’s travel special of the week was to Antarctica. Since Rosemary Schwartzbard had always wanted to travel there, she convinced Dick, and called the number listed. As a result, in a few months they leave for Buenos Aires, Ushuaia, on the Argentinean half of Tierra del Fuego, and then on to Antarctica. Cool!

Do check out our new PVS web page. It’s at the same [www.PotomacValleySkiers.org](http://www.PotomacValleySkiers.org) ExComer Dave Lerner has revamped it. There’s lots of kneet new information. I particularly liked the evolutionary data on wildebeests

Burr Schuler showed several the lengthy scars down the back of his neck from having melanoma removed. Because of this, Burr says he’ll no longer walk around stark necked.

## PVS Calendar/PVS Club Information

Local Event Calendar				Ski Trip Calendar (Western, Euro, South America)	
Oct	7-9	Sat-M	Fall Hiking at Blue Knob	Dec 8-15, 06	Steamboat (Dick Comerford)
Oct	17	Tue	Monthly Meeting –	Jan 18-25 07	Snowmass (C.Maurer/D.DeVilbiss)
Oct	18	Wed	Frank Shelburne Hike	Feb 3-10 07	Big Sky (PVS/BRSC Winterfest) (Marty.Rine/Jan.Marx)
Oct	24	Tue	ExCom at Knopes'	Mar 3-11 07	Sun Peaks (Ray/Nancy McKinley) <i>Note date change for Sun Peaks</i>
Oct	28	Sat	Kentlands Hike	Mar 3-10 07	Schladming (PVS/BRSC Eurofest) (Glade.Flake/John Smith) (Athens Feb 26 – Mar 3 Vienna Mar 11-13)
Oct	29	Sun	Oktoberfest -- Vagonis	Aug 9-25 07	Argentina/Brazil (Ray/Nancy McKinley)
Nov	4	Sat	Chili Hike -- McKinleys		
Nov	17	Fri	Wine tasting, 8 PM		
Nov	21	Tue	Monthly Meeting Finan/Welti		
Nov	28	Tue	ExCom at Marx's		
Dec	19	Tues	Monthly Mtg at Monaghan's		
Dec	21	Thurs	Day Ski Trip		



**November TOOT:** Jan Marx will resume as editor for the November issue of TOOT. Copy can be submitted to [toot@potomacvalleyski.org](mailto:toot@potomacvalleyski.org) and it will be forwarded to the editor of the month. This October issue was edited by Marvin Hass.

Photo on Left shows Chairman of Trips Committee, Bob Marx, and the regular TOOT editor, Jan Marx, at their cabin bordering on a lake in Minnesota. Some issues of TOOT have been assembled here. [Photo included at request of October editor Marvin].

Weather report at the lake (Sept. 22): Very strong winds from the East coming straight at us today. REAL big rollers and whitecaps. As rough as we ever see it. The lake is 4+ miles across in front of us so we get the full force. It is rainy and about 55 degrees. [October editor's note: Sept. 22 Washington weather: Sunny and mild; no wind]

### Change of postal or e-mail address:

Call Pat Vagonis at (301) 838-5545  
or send e-mail message to  
[pvagonis@comcast.net](mailto:pvagonis@comcast.net)

### E-mail Notice

If you want to start receiving Toot electronically, or change the e-format you receive, please let me know.

Thanks, Jan = [jebbmarx@aol.com](mailto:jebbmarx@aol.com).

### PVS BOARD MEMBERS, OFFICERS, and CHAIRPERSONS - 2006-2007

President - *David Abraham*

Vice President - *Mike Strand*

Secretary - *Mary Beale*

Treasurer - *Ray Jones*

Membership - *Pat Vagonis*

Events - *Ray McKinley*

Non-skiing Activities - *Mike Strand*

Webmaster - *David Lerner*

Ski Trip Cmte Chair - *Bob Marx*

TOOT Editor - *Jan Marx*

TOOT Proofreader - *Bob Marx*

TOOT Mailer -

Meeting Records - *Sara Huggins*

Historian - *Jan Marx*

#### First Term:

*Bob Knopes*

*Dick Laeser*

*David Lerner*

#### Second Term:

*Charlotte Eddy*

*Burr Schuler*

*Dick Schwartzbard*